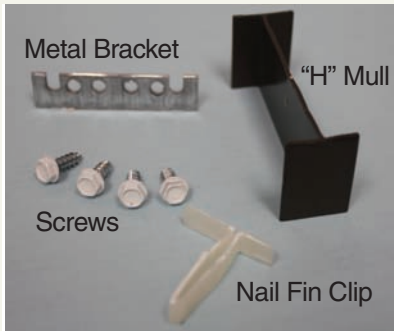


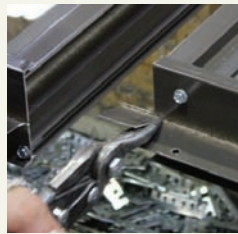


Vertical Mulling Instructions - Aluminum

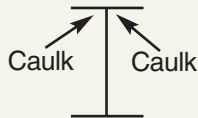
Vertical Mull Components



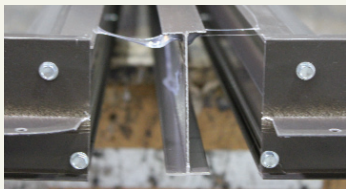
- 1 Lay units on flat surface with exterior side up. Remove nail fin on the side of each window where they will be joined (scribe nail fin and bend back and forth).



- 2 Apply clear silicone down the entire length of the 2 exterior corners of the "H- mull".



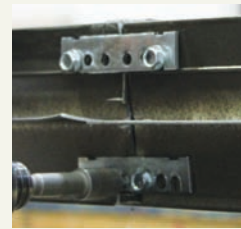
- 3 Place "H-mull" between windows and push together.



- 4 Slightly loosen the screws on the exterior side of the top and bottom corners at "H- mull"; slide metal bracket with the slotted holes under loosened screws and re-tighten all screws.



- 5 Remove the inside screws, put on metal bracket and re-tighten screws in the middle hole locations.



- 6 Add 2 additional 1/2" hex head screws in both center holes of each exterior bracket.



- 7 Silicone caulk the exterior head jamb joint, screw heads and place plastic nail fin clip on the head nail fins, making them a continuous piece.

