



Manufacturers of Premium Vinyl & Aluminum Windows

WARM EDGE TECHNOLOGY



TEXAS DEPARTMENT OF INSURANCE

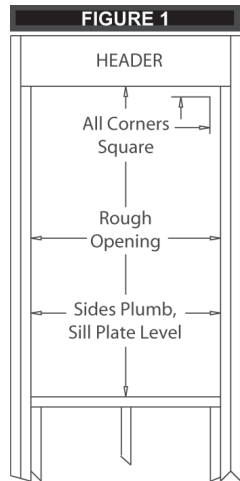
Windows must be square and sash must be locked during install to ensure smooth operation of windows

Important: This installation practice is acceptable. There are several different methods for window installation in practice in each state, i.e.: AAMA, ASTM, Local Building Codes, etc. There can be different local and state codes that apply at each location. It is important to check your local and state requirements prior to installation. All practices that create a continuous seal from outside elements can be used. Krestmark does not oversee any job site installation inspections nor do we install any window at the jobsite. Krestmark is not responsible and cannot be held liable for any or all installation practices.

Dallas, Texas • 214-237-5055 or 1-800-853-3593

Installation Instructions For New Construction: Casement, Awning and Picture Windows

Inspect all windows carefully and DO NOT INSTALL if damaged or defective.



Window Opening

The rough opening must be plumb, level and square and 1/2-inch larger than window size in width and height, not including the nailing fins (see fig. 1). Close and lock the sash to aid in keeping the window square during installation.

Apply a 3/8-inch continuous bead of silicone caulking to the interior surface of the nailing fin covering the holes in the fin, to seal the window's fin to the sheathing or house wrap. If the rough opening is larger than the window unit by more than 1/2-inch, also apply the caulk to the sheathing or house wrap, making sure the bead is no more than 1/4-inch from the edge of the rough opening, so that it is covered by the nailing fin when the window is installed.

Setting Shims

The sill of the window must be supported in a straight and level position at a minimum of three points, at either end and in the middle. Windows wider than 30 inches should be supported at a maximum of every 12 inches (see fig. 2).

Placing Shims

Place 1/4-inch shims on the sill plate of the window opening spaced as described above. Multiple twin or triple windows should have a shim under each mullion (see fig. 2).

Setting Window

Set window on the shims and adjust side clearance to be equal on both sides. Tack one upper corner of the fin to keep window in place. Check sill with a level and adjust thickness of shims as required to level sill. Readjust side clearance if necessary. Shims must be cut to exact thickness to fit snug and not fall out but do not force shims into place, pushing the sill upward out of level. Shim both sides of window (see fig. 2) and adjust thickness of shims to make diagonal measurements equal with the window plumb and square.

If the above has been done correctly the width across the top, middle and bottom will measure the same. The margin or clearance between the sash stile and jamb mainframe will be equal and consistent all the way around.

Fastening Windows with Nail Fins

The wood wall framing members shall be minimum Spruce-Pine-Fir dimension lumber. The windows shall be secured to the framing 1 1/2" through the nail fin with minimum #8 Truss Head screws, corrosion resistant as specified in the International Building Code (IBC), International Residential Code (IRC) and the Texas Revisions. Add to length of screw for thickness of foam sheathing if used.

Fasteners shall be spaced approximately 2" from each corner and approximately 12" on center around the perimeter of the window. The fasteners shall be long enough to penetrate a minimum of 1 1/2" into the wall framing. Muller or multiple window units must be fastened directly at the mullion and approximately 6" on either side of the mullion. Fasteners should be centered in the slots, snug but do not draw all the way in, similar to installing vinyl siding. This allows for normal expansion and contraction. **Make sure head and sill are not bowed up or down. Check side jamps are not bowed in or out. Do not drill or fasten through sill.**

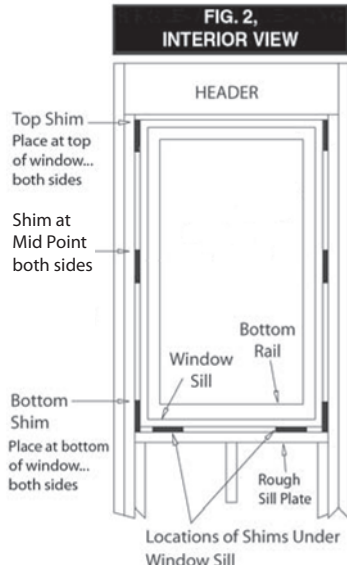
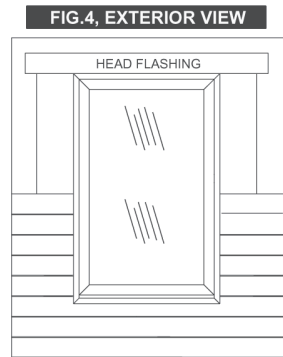
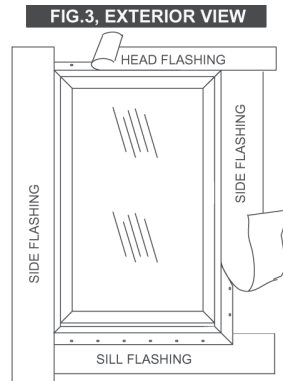
Flashing

Use self adhesive flexible flashing a minimum of 9" wide, which has a self-adhering surface on one side, approved for use on vinyl, aluminum, and other substances such as house wrap. This flashing material must meet a minimum water resistance of 24 hours in accordance with ASTM-D779 and AAMA Certified Installation Guidelines.

(See fig. 3) Sill flashing is applied first up against the bottom of the window sill extending beyond the sides of the window jamb fin and side flashing at least 2 inches. Apply jamb flashing next over the jamb-nailing fin, continuing over and beyond the sill flashing, 2 inches below. Apply head flashing similarly, extending 2" past either side of the jamb flashing, to complete the window flashing detail.

(See fig. 2) Install insulation between the window and rough opening. It is very important that these openings are not overstuffed and bow the frame. Do NOT use expanding foam. Doing so will void warranties. Unlock and open window fully, close and lock, checking full operation of window.*

*See website for hardware adjustment instruction, if necessary at www.krestmark.com



CAUTIONS

- Do not lay windows flat or store in the sun. The heat will shrink the plastic wrapping and warp the frame.
- Do not drill into or through the sill of the window.
- Protect the window during construction and plastering
- Do not lift window by top of frame, only by jamps.
- Protect vinyl sill from traffic and damage.



For updated information on approvals and/or installation guidelines, go to www.krestmark.com



Energy Star compliant with Low E only